

## Legend

- Double Track (For Vehicle less than 50" wide)
- Single Track (Closed to ATVs, Trail #s start with #2 or 5)
- Forest Service Road
- Main Road
- Learner's Loop
- Easiest
- More Difficult
- Most Difficult
- Extremely Difficult
- Proposed
- Primitive or Closed Road
- Aspen Trail Head
- Private Lands
- Provincial Parks
- Gravel Pit (No Access)
- Mineral Extraction Area (No Access)
- Grasslands Protected Area (No Access)

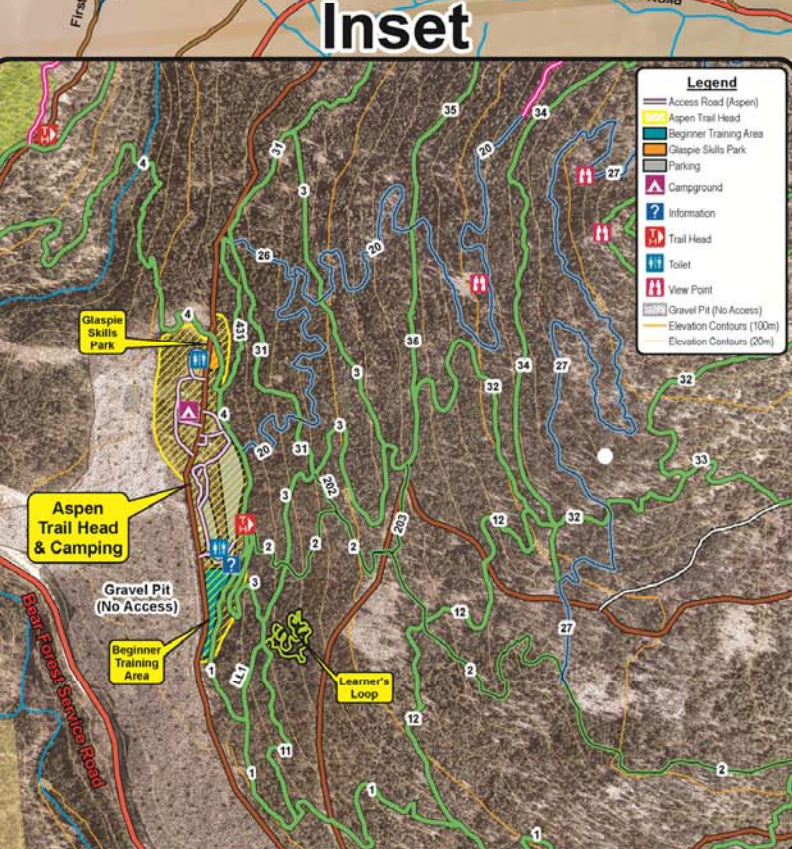


Map: Geo Earth Mapping  
 Date: August 4 2015  
 Datum: PCS Albers  
 Data Sources: RecConnect, OTRA, DataBC, Geogratis

Scale: 1: 25,000



**NOTICE!**  
 Any road is subject to being closed or regulated for commercial haul. Please read and heed all posted signs and stay out of active logging areas to avoid any potential hazards!



- ### Inset Legend
- Access Road (Aspen)
  - Aspen Trail Head
  - Beginner Training Area
  - Glaspie Skills Park
  - Parking
  - Campground
  - Information
  - Trail Head
  - Toilet
  - View Point
  - Gravel Pit (No Access)
  - Elevation Contours (100m)
  - Elevation Contours (20m)

**Reasons For Limited And Closed OHV Areas**  
 The purpose of limiting or closing areas to OHV may be to protect such resource values as soils, watershed, vegetation, wildlife and viewshed, human safety issues and/or to resolve potential user conflicts. For further information please contact the local District Recreation Officer.

**How To Get There**  
 From Hwy 97 between West Kelowna and Kelowna, turn NW onto Westside Road. Follow this paved road which skirts the west side of Okanagan Lake for 8.4 km. Turn left onto Bear Main Forest Service Road (follow signs for Bear Creek OHV Trails)  
 CAUTION: "Bear Main" has heavy logging and other commercial truck traffic. Take this double-lane gravel road to the 8 km mark. Turn right and follow the signs to the Aspen Trailhead.